



SOUND

FOH / PA

1	x	Digico SD9 Console Full Version (Dynamics, FX, Eqs inside)
1	x	L'Acoustics KILO LF (each side as front PA)
3	x	L'Acoustics KIVA (each side as front PA)
2	x	L'Acoustics KIVA (each side as DelayLine)
2	x	L'Acoustics KIVA as Rear PA for Disco/Party (each side)
4	x	L'Acoustics SB28, Subwoofer 2 x 18" (Downstage)
3	x	L'Acoustics LA4, Amplified Controller 4x1000 W / 4 Ohms
1	x	L'Acoustics LA8, Amplified controller 4x2000 W / 4 Ohms

MONITORING

1	x	Yamaha LS-9/32-Channels
8	x	L'Acoustics 12XT Wedges
4	x	L'Acoustics LA4, Amplified Controller 4x1000 W / 4 Ohms

MICROPHONES / DI BOXES

2	x	Shure ULX 2 Beta 58 UHF S3	4	x	Sennheiser e606
6	x	Shure SM 58	4	x	Sennheiser e614 (condensor)
6	x	Shure SM 57	2	x	Sennheiser MD421-II
1	x	Shure Beta 52A	4	x	BSS AR 133 active DI
1	x	Shure Beta 91	4	x	Palmer PDI-01 passive DI
3	x	Sennheiser e604	4	x	LD Systems LDI 02 active DI

2ND FLOOR / CAFÉ

4	x	L'Acoustics 8XT (on the walls)
1	x	15" passive subwoofer can be added

PARTY / DJ TECHNİK

- 2 x Pioneer DJM 900 (DJ Mixer)
- 2 x Pioneer DJM 800 (DJ Mixer)
- 2 x Pioneer CDJ 2000 Nexus (CD Player)
- 2 x Pioneer CDJ 1000-MKIII (CD Player)
- 2 x Technics SL1210-MKII (Turntable)
- 2 x Technics SL-1210 MK5 (Turntable)
- 2 x EV ZLX-12P Aktivboxen 12"/1,5 1000W (Monitor)

MADI PROFESSIONELL LIVE-RECORDING

Bis zu 64 Einzelspuren.
Direkt nach der Show bekommt ihr einen
Flash Drive mit den Spuren in einer Logic X
Session zum Mitnehmen ausgehändigt.

Bei Interesse bitte Kontakt über:
sound@astra-berlin.de



sound@bi-nuu.de

info@bi-nuu.de

light@bi-nuu.de

Fon: +49 (0) 30-69 56 68 40



Fax: +49 (0) 30-69 56 68 42

www.bi-nuu.de

[Google Maps link](#)

BiNuuBerlin

LiGHT

MAINFLOOR ON STAGE

4	x	Martin MH1+
4	x	GLP Volkslicht RGB
2	x	Led Blinder
8	x	Expolite TourLED42 (Backtruss)
16	x	Expolite TourLED42 Floorspots
4	x	fresnel lens (side/front)
1	x	Look Solutions Viper S
1	x	16A 3 Phase power on stage

MAINFLOOR DiSKO

4	x	Ehrgeiz Cobalt Spot 90
2	x	GLP Volkslicht RGB
6	x	Futurelite LB-12 LED Bar
4	x	Par 56 (Merch)
2	x	Eurolite FE-800

2ND FLOOR / CAFÉ

11	x	LED Par
13	x	Pin Spot
2	x	Ehrgeiz Cobalt Spot 90
4	x	Eurolite TSL-100
3	x	Casio XJ-V1 (Laser/LED Beamer, 1024x768, 2700 ANSI-Lumen)

CONTROLLiNG

MA Lighting – GrandMA2 OnPC Command Wing

BEAMER

1	x	BenQ w700 2000 ANSI-Lumen, VGA, HDMI s-Video, Video und Component
---	---	---

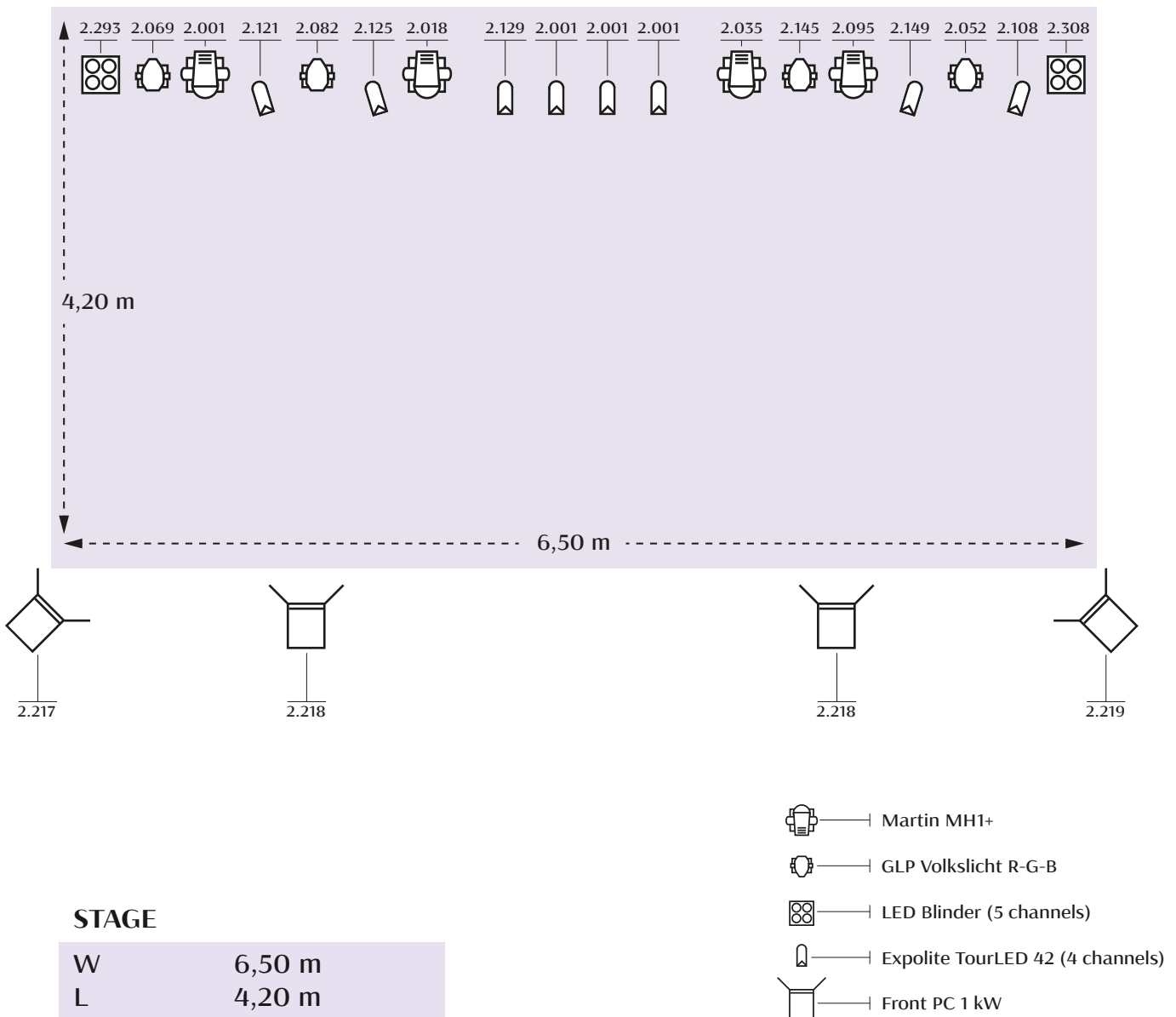
SLiDE-PROJECTOR

8	x	
---	---	--





LIGHTPLOT



STAGE

W	6,50 m
L	4,20 m
H	0,85 m
Clearance	2,80 m

Lights are hanging mounted



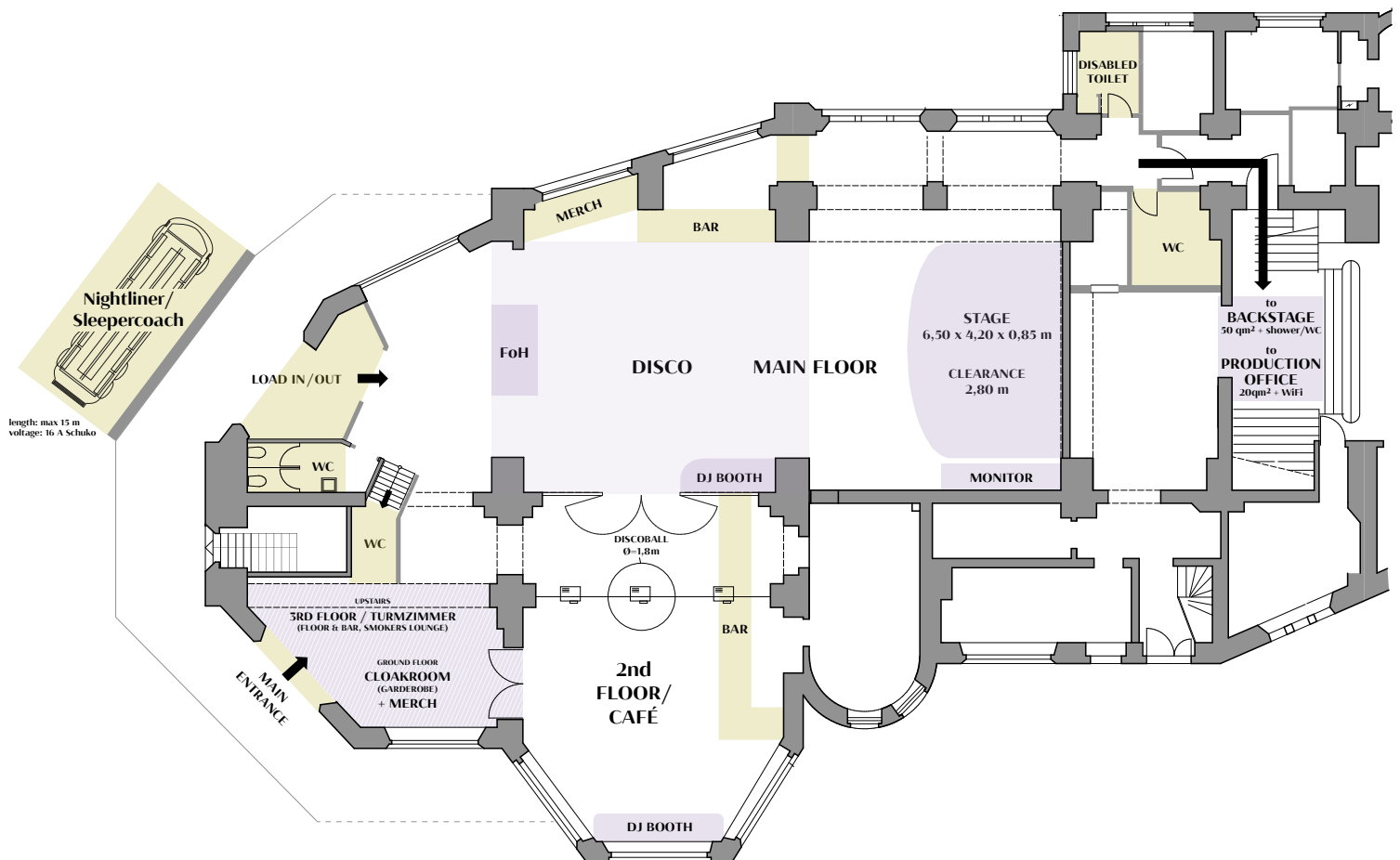


LOCATION

for navigation insert: Skalitzer Str. 74

STAGE

W	6,50 m
L	4,20 m
H	0,85 m
Clearance	2,80 m





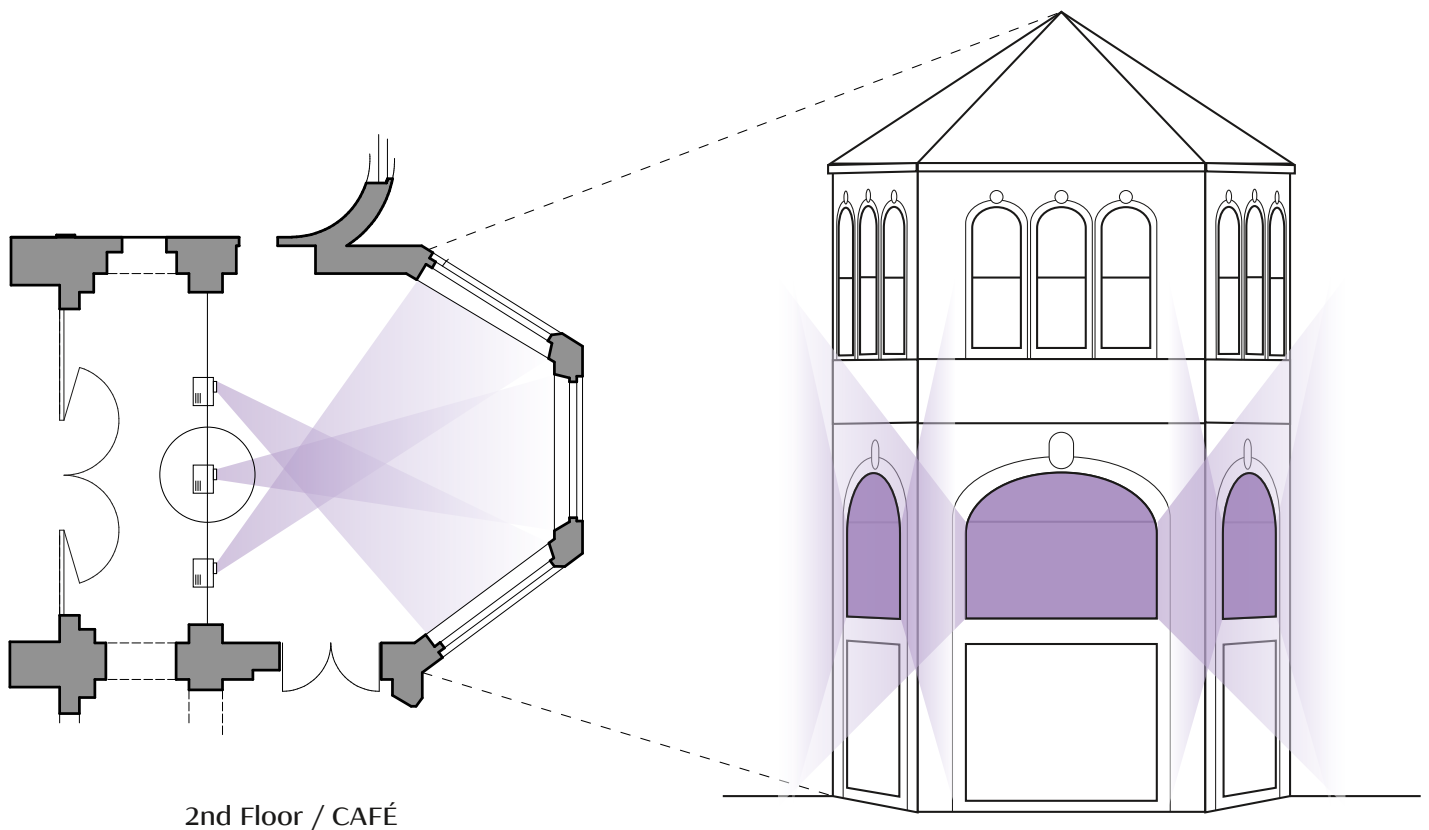
VISUALS 2ND FLOOR / CAFÉ

3 x Casio XJ-V1 (Laser/LED Beamer, 2700 ANSI-Lumen)

Auflösung: 1.024 x 768 Pixel
(max.: 1.600 x 1.200 Pixel, wird auf
1.024 x 768 Pixel komprimiert)

Formate: Bilder: .jpeg , .png
Videos: .mov , .wmv

Daten bitte auf USB-Stick mitbringen oder vorab via Mail
schicken.



2nd Floor / CAFÉ

VIEW FROM THE OUTSIDE

