

Lido

**Venue:**

Lido Berlin

Venue:

Lido Berlin

Cuvrystr. 7

10997 Berlin

Registered Office Address

Lido Kultur- und Veranstaltungen GmbH

Cuvrystr. 9

10997 Berlin

+49 (0)30 69566840

rechnung@lido-berlin.de

Contact:

Booking: booking@lido-berlin.de

Venue Management/Production:

clubmanager@lido-berlin.de

Sound: sound@lido-berlin.de

Light: light@lido-berlin.de

Website + Social Media

www.lido-berlin.de

facebook.com/lidoberlin

instagam.com/lidoberlin



Capacity

Maximum capacity: 600

(Recommended standing capacity for dynamic audience: 550)

FOH Center

Via request

Parking

Non-exclusive loading area with a total length of 20 meters

Available from 10am on at Cuvrystraße 7

Bus power available. Please bring your own cable (min. 20m)

Get In and Curfew

Get In:

Mo-Fr: 12am // Sat & Sun: 2pm

If earlier Get In is needed, please contact us and see our price list.

Curfew:

Sun-Thu: Venue Curfew 1,5h after show end

Fri & Sat: Stage Clear 10:30pm strict

Backstage Curfew 2h after show ends, Fri & Sat at midnight



Backstage

1 room + toilet and shower

Direct access to stage (please note: very narrow) with
WIFI

1 table for local catering, 1 big fridge, coffee machine + kettle

Additional Backstage Area (1 room/on request only):

40sqm/2 x toilets/1 x fridge/2 x basic table & bench setup

Please get in touch beforehand to make sure the room
is available. Rental costs are mentioned in our price list.

Please note: We don't provide inhouse
stage/shower towels, dishes & cutlery.
No plastic bottled stage water available

Production Office

1 x production office with WIFI + printer

2x desks, 1x couch

Access only via narrow stairs

A separate key is required to enter the area, which will be provided
by your local promoter or venue representative.

Merchandise

No fee

We provide a selling corner including 2x glass vitrines, lighting and
grids to hang merchandise

Confetti and additional show elements

Due to historical, valuable vintage chandeliers on the ceiling
and wooden floor in the concert hall, confetti and additional
show elements as such are, in general, not allowed at Lido.



For any questions concerning our technical rider,
please get in contact with our Inhouse technicians

sound@lido-berlin

light@lido-berlin

Stage

Height: 96 CM

Width: 630 CM

Depth: 370 CM

Clearance: 406 CM

Hall

depth: 13.84M

Backdrop

6m wide aluminum pipe with chain holists stage L+R.

Riser

4 x 2m/1m BUETEC

1x 1m/1m BUETEC

Variety of leg sets:

16x40cm/12x27cm

Rigging

Please note that any additional rigging to our truss is not possible.

Lido

FOH DESK

DiGiCo Quantum 225
Firmware Version V2232
Waves Soundgrid Mobile Server with
Waves Ultimate SPL Measurement and
RTA with Open Sound Meter
Stagebox: Digico MQ-Rack 48/24 I/O

FRONT PA

TOPS: L-Acoustic ARCS II
Vertical Cluster of 3 Pieces per Side
SUBS: 4 x L'Acoustic KS28
Front Fills: 2x L-Acoustic x8

REAR PA (for parties)

Martin Audio THV
Three-way bi-amp trapezoid Hybrid®
fully horn loaded

PA AMPING

2x L-Acoustic LA12X
1x L-Acoustic LA4X
1x L-Acoustics LA4

SYSTEM PROCESSOR

1x Lake LM44 4 in/4out
System Drive via Analog
or AES L/R or LRSF

MONITORING

Speaker: 8 x Martin Audio L100
2x L-ACOUSTICS X12
2x Martin LE400 15" (DJ
monitoring)
1 x 12 Aktiv Sub Thomann T Amp

MONITOR AMPING

2x Martin Audio iK81
1 x Crest CC4000
1 x Crest CC2800

MONITOR CONSOLE

DiGiCo SD9, Stealth Core 2
w/ Firmware Version 2232
Stagebox: D- Rack 2P 32/16 I/O
Passive Splitter 32Ch.

If a separate monitor mix on stage is required, we can offer to book a second in house sound technician for you - otherwise monitor mix could only be provided from FOH.

SHOUTBOXES:

1x Behringer Eurolive B10SD (FOH)
1x DB Technologies 162/1 (Monitors)

NETWORK / CAT LINES

3 x CAT7 installed from FOH to Stage Left
1x CAT5e 30m on Cable Drum

ANALOG LINES

2 x channels of send/return from FOH to
Stage Left



MICROPHONES

4x Shure Beta 52A
1 x Shure Beta 91
8x Shure SM58
1x Shure SM58S
5x Shure Beta 58a
12x Shure SM57
7x Shure Beta 57A
9x Sennheiser e604
2x Sennheiser e906
2x Sennheiser e609
2x Sennheiser e945
4x Sennheiser MD421
3x Sennheiser e614
8x AKG SE 300B with CK91
1x AKG C1000S
1x RODE M5 2x SE V7
1x Electro-Voice RE-20

> We can't provide any wireless microphones, IEM or transmission paths

DJ

1 x Mixer PIONEER DJM 900 NXS2
1 x Mixer PIONEER DJM 900 Nexus
3 x CD Player PIONEER CDJ 2000 Nexus
1 x Turntable TECHNICS SL 1200 MK II
1 x Turntable TECHNICS SL 1210M3D
2 x Turntable PIONEER PLX 1000
2x TP Link 5 Port Gigabit Switch

D.I. BOXES

Passive

4x IMG DIB-100 Mono
4x IMG DIB-102 Stereo
2x Palmer PAN 01 Stereo
1x Palmer PAN 01 Mono

Active

11 x BSS Audio AR-133

AVAILABLE VOLTAGE PLUGS FOR SOUND (position stage left)

1 x CEE 3 x 63A/400V FUSE 63A (D02)
2 x CEE 3 x 32A/400V FUSE 35A (D02)
1 x CEE 3 x 16A/400V FUSE 16A (L16A)

VOLTAGE PLUGS IN USE

1 x CEE 3 x 32A/400V FUSE 32A (B32)
1 x CEE 3 x 16A/400V FUSE 16A (L16A)
3 x SCHUKO/230 V FUSE 16A (B16)



LIGHTS (ON STAGE)

8 x ADJ Mega Tripar Profile Plus
6 x MARTIN ERA 150 WASH
10 x PAR 64 CP87/NSP
6 x ROBE CUETE
6 x ETC SOURCE FOUR JR.
4 x STRAND FRESNELLENS
4 x 2-LITEBLINDER
4 x MARTIN RUSH STROBE CWL
1 x HAZEBASE HAZER PRO å 1500W
6 x LITECRAFT WASH X.21 (optional as Floor)

DIMMERUNIT

1 x PEGASUS digital dimmer, 12 channels
(FUSE 12 x C 16A)
2 x CAMCO 1210 digital dimmer, 12 channels
(FUSE 12 x K 16A)

LIGHT - ON DANCEFLOOR

4 x ROBE ROBIN 100 LEDBEAM
1 x ANTARI Z-1500 Series II
2x ETC SOURCE FOUR JR. (for diskoball)

CONTROLLING

1 x CHAMSYS MAGIC Q70 + camsys compact wing

VIDEO (please see price list for additional costs)

1X CASIO XJ-UT311WN short-throw projector with 3100 ANSI lumens on back truss
1 x Screen 4m x 5m
30m HDMI from beamer to FOH
5m HDMI from beamer to stage

Please note!

Bring your own Thunderbolt | HDMI + Laptop/other device

2 x CASIO XJ-V2 CORE
(controlled via RESOLUME ARENA VERSION 5 – just accepting .PNG or.MOV Format (for floor projection)

AVAILABLE VOLTAGE PLUGS FOR

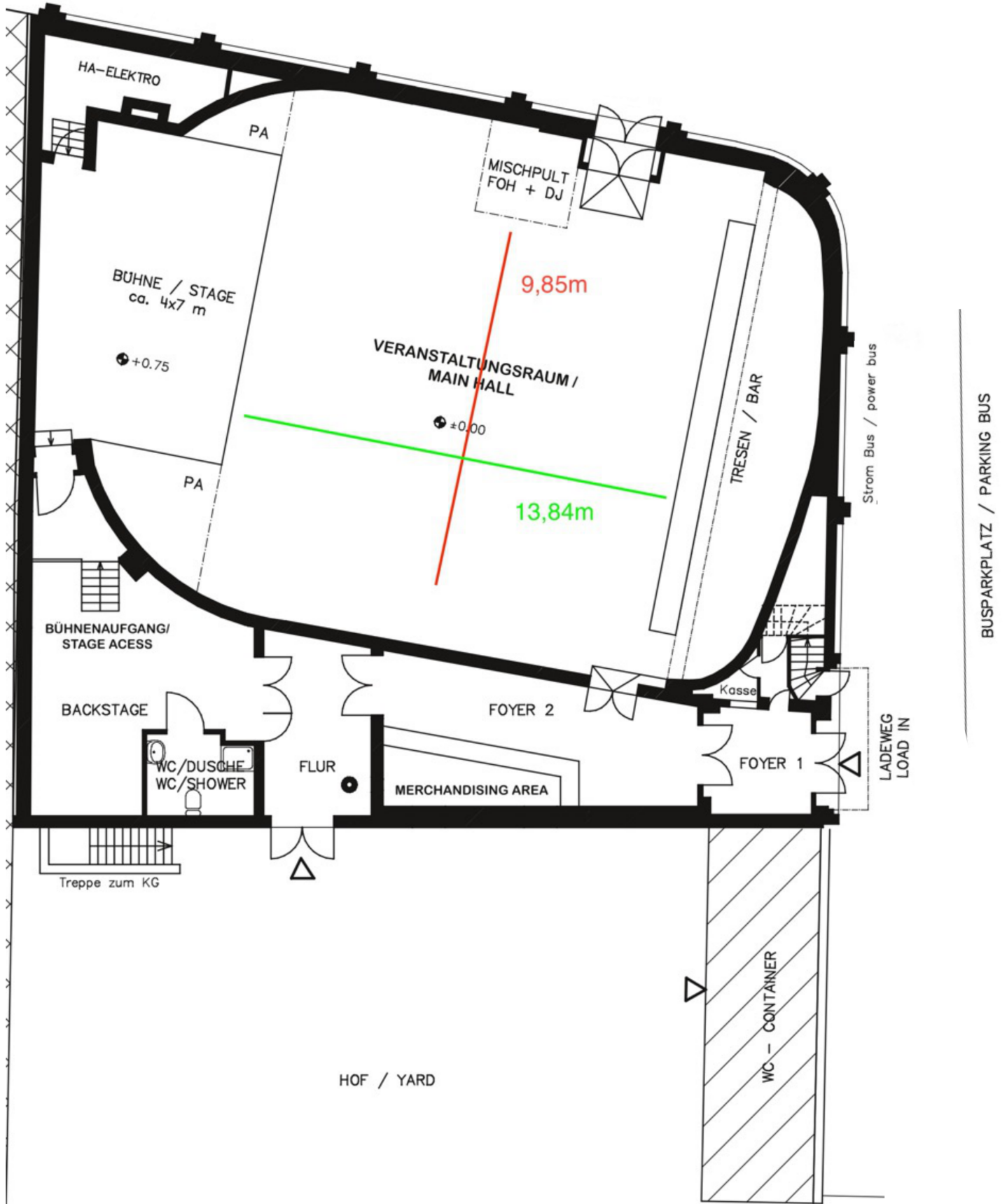
LIGHTS (position stage right)
1 x CEE 3 x 63A/400V FUSE 63A (D02)
3 x CEE 3 x 32A/400V FUSE 35A (D02)
1x UNDERDISTRIBUTION 32A/400 (6plugs)



Lidopatch 2026

HeadID	FIXTURE	UNIVERSE	DMX ADRESSE	CHANNEL	QUANTITY
401-409	ADJ Mega Tripar Profile Plus	A	1.7.13.19.25.31.37.43	6	8
301-304	Martin Strobe Rush CWL	A	50.54.58.62	4 - mode	4
101-106	ROBE CUETE	A	85.114.143.172.201.230	29	6
201-206	Martin Era150Wash	A	259.277.295.313.331.349	18	6
500-501	HAZEBASE HAZER PRO	A	500	2	1
801-804	ROBE ROBIN 100 LEDBEAM (Dancefloor)	B	300.337.374.411	37 - mode 6	4
001-036	DIMMER 36CH	B		36	24
	PAR 64 StageRight		1-5		5
	PAR 64 StageLeft		7-11		5
	2 LITEBLINDER		13-16		4
	ETC Source Four 26 Profiler		19-24		6
	ETC SOURCEFOUR JR Mirrorball		31,34		2
	STRAND FRESNELLENS		32,33		2
701-704	Optional Floor: LITECRAFT BEAMX.7	B	53.63.73.83	10 - mode 10ch	4
601-606	Optional Floor: LITECRAFT WASHX.21	B	113.119.125.131.137.143	6 - mode 6ch	6

Lido



Lido



